



prince alexander

ARCHITECTURE   ENGINEERING   URBAN DESIGN   LAND PLANNING   ECONOMIC DEVELOPMENT   INTERIOR DESIGN

850 SOUTH MERIDIAN STREET INDIANAPOLIS IN 46225-1110   317-261-0070   WWW.PRINCEALEXANDER.BIZ



RED BLEND ASPHALT SHINGLES



BRIGHT RED METAL PANEL ROOFING



WHITE LP SMARTSIDE TRIM BOARDS



DARK BROWN BOARD & BATTEN-LOOK SIDING



BROWN COUNTY STONE

TYPICAL MATERIAL EXAMPLES

prince alexander

ARCHITECTURE   ENGINEERING   URBAN DESIGN   LAND PLANNING   ECONOMIC DEVELOPMENT   INTERIOR DESIGN

850 SOUTH MERIDIAN STREET INDIANAPOLIS IN 46225-1110   317-261-0070   WWW.PRINCEALEXANDER.BIZ



REPRESENTATIVE BUILDING EXAMPLES

prince alexander

ARCHITECTURE   ENGINEERING   URBAN DESIGN   LAND PLANNING   ECONOMIC DEVELOPMENT   INTERIOR DESIGN

850 SOUTH MERIDIAN STREET INDIANAPOLIS IN 46225-1110   317-261-0070   WWW.PRINCEALEXANDER.BIZ



REPRESENTATIVE BUILDING EXAMPLES  
W/ ELEVATED LEVELS

prince alexander

ARCHITECTURE   ENGINEERING   URBAN DESIGN   LAND PLANNING   ECONOMIC DEVELOPMENT   INTERIOR DESIGN

850 SOUTH MERIDIAN STREET INDIANAPOLIS IN 46225-1110   317-261-0070   WWW.PRINCEALEXANDER.BIZ

SITE FEATURES

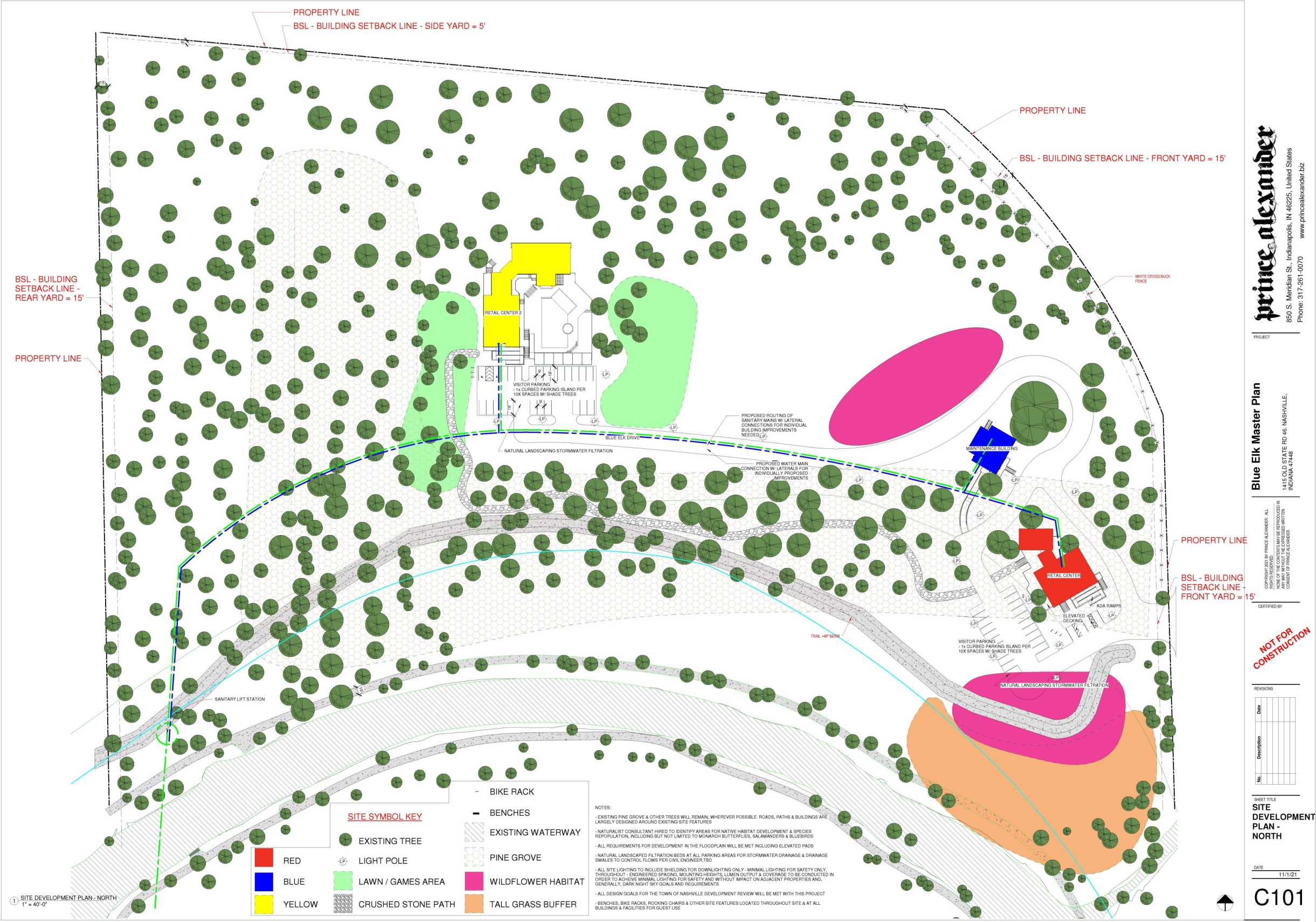
- SHIELDED DOWNLIGHTING
- AMPLE SEATING ALONG WALKING PATHS
- ARTFULLY-CRAFTED BICYCLE PARKING



**prince alexander**

ARCHITECTURE ENGINEERING URBAN DESIGN LAND PLANNING ECONOMIC DEVELOPMENT INTERIOR DESIGN

850 SOUTH MERIDIAN STREET INDIANAPOLIS IN 46225-1110 317-261-0070 WWW.PRINCEALEXANDER.BIZ



**prince alexander**  
ARCHITECTURE  
850 S. Meridian St., Indianapolis, IN 46225, United States  
Phone: 317-261-0070  
www.princealexander.biz

**Blue Elk Master Plan**  
1415 OLD STATE RD 46, NASHVILLE,  
INDIANA 47448

CERTIFIED BY  
NOT FOR CONSTRUCTION

No.	Description	Date

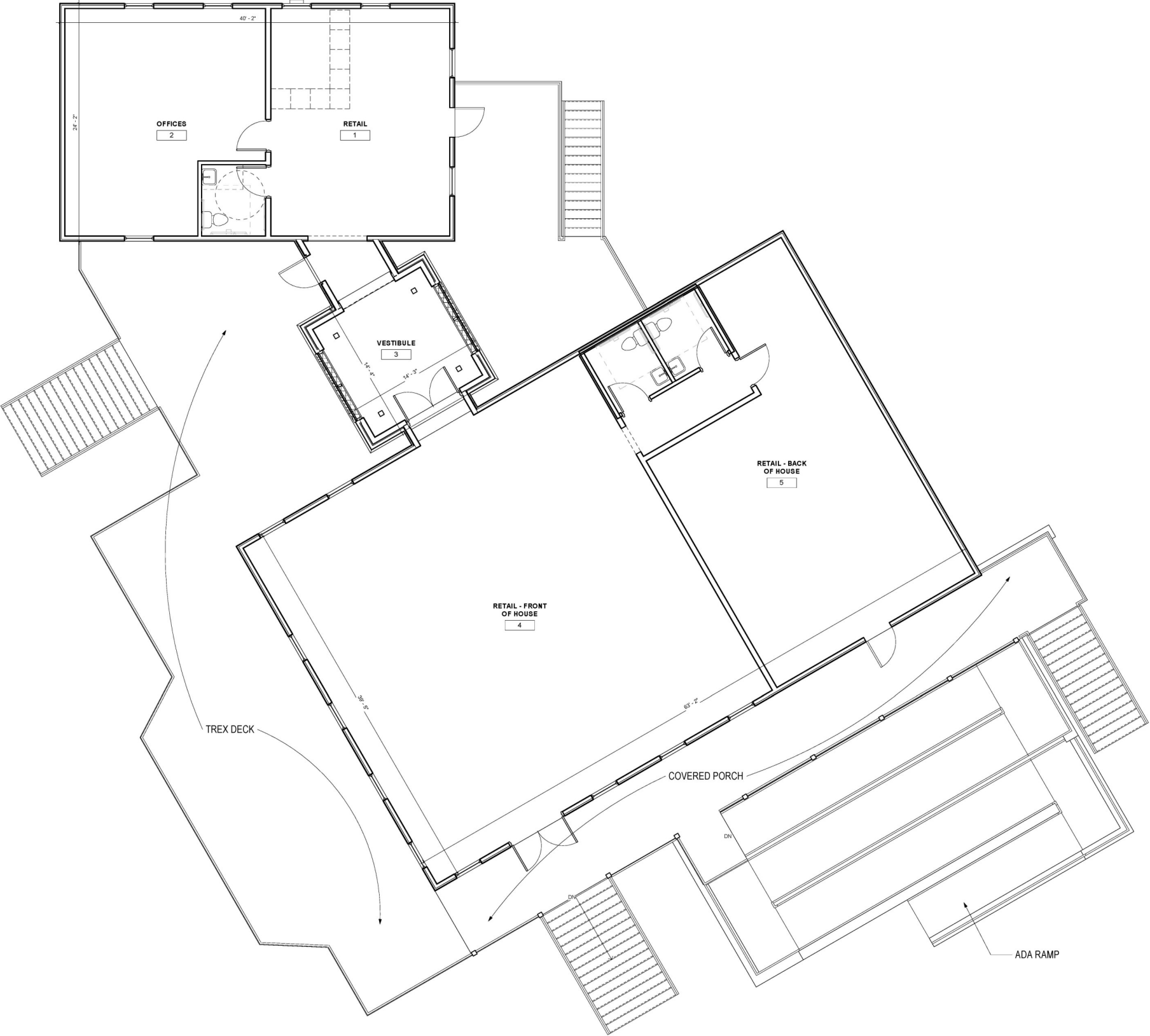
SHEET TITLE  
**SITE DEVELOPMENT  
PLAN - NORTH**

DATE  
11/1/21  
**C101**

**prince alexander**

ARCHITECTURE   ENGINEERING   URBAN DESIGN   LAND PLANNING   ECONOMIC DEVELOPMENT   INTERIOR DESIGN

850 SOUTH MERIDIAN STREET INDIANAPOLIS IN 46225-1110   317-261-0070   WWW.PRINCEALEXANDER.BIZ



RETAIL CENTER #1

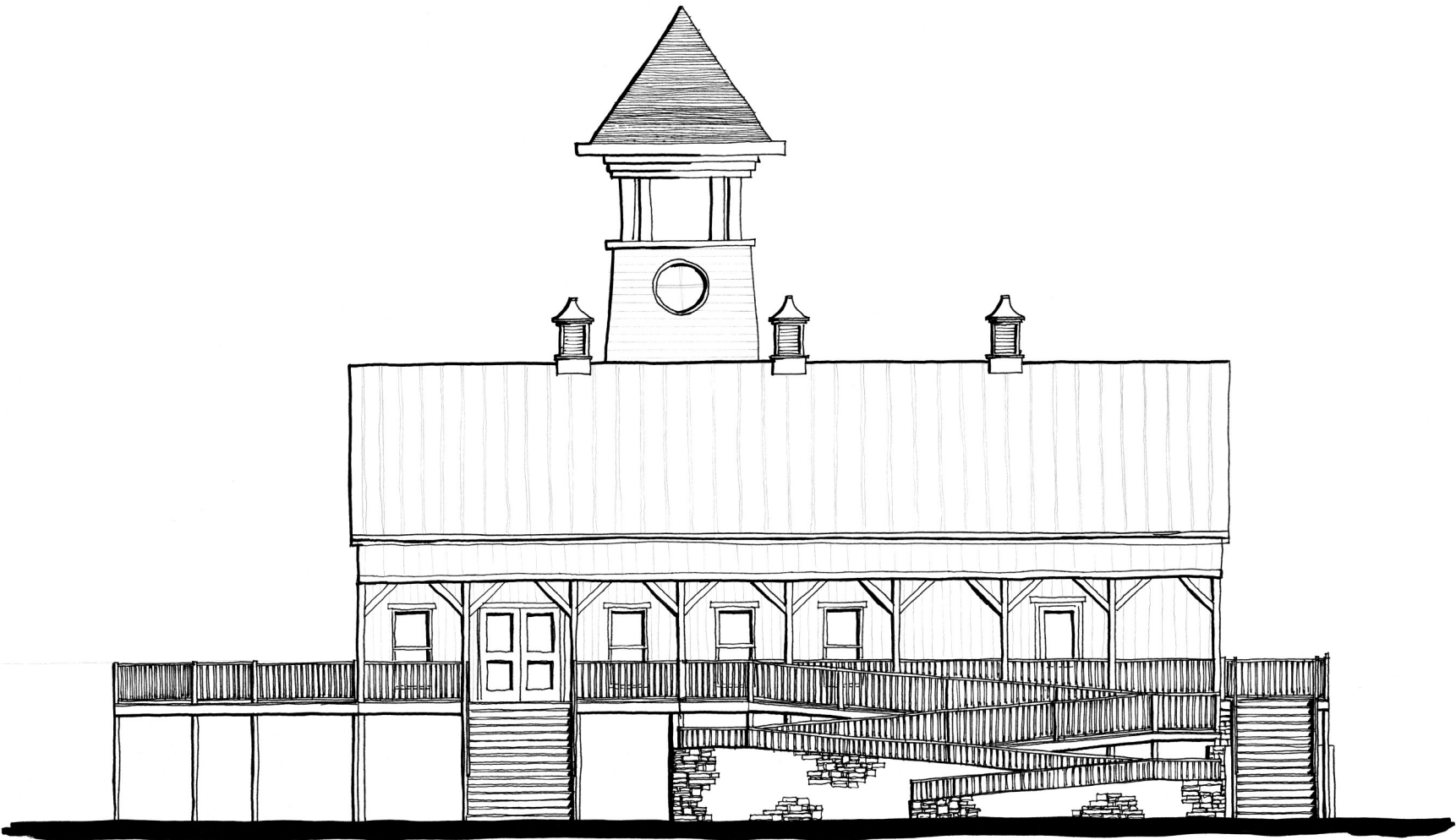
3800 SF ENCLOSED

6200 SF TOTAL FIRST FLOOR

**prince alexander**

ARCHITECTURE   ENGINEERING   URBAN DESIGN   LAND PLANNING   ECONOMIC DEVELOPMENT   INTERIOR DESIGN

850 SOUTH MERIDIAN STREET INDIANAPOLIS IN 46225-1110   317-261-0070   WWW.PRINCEALEXANDER.BIZ



BLUE ELK RETAIL BUILDING #1 - SOUTH ELEVATION 1/4" = 1'-0"

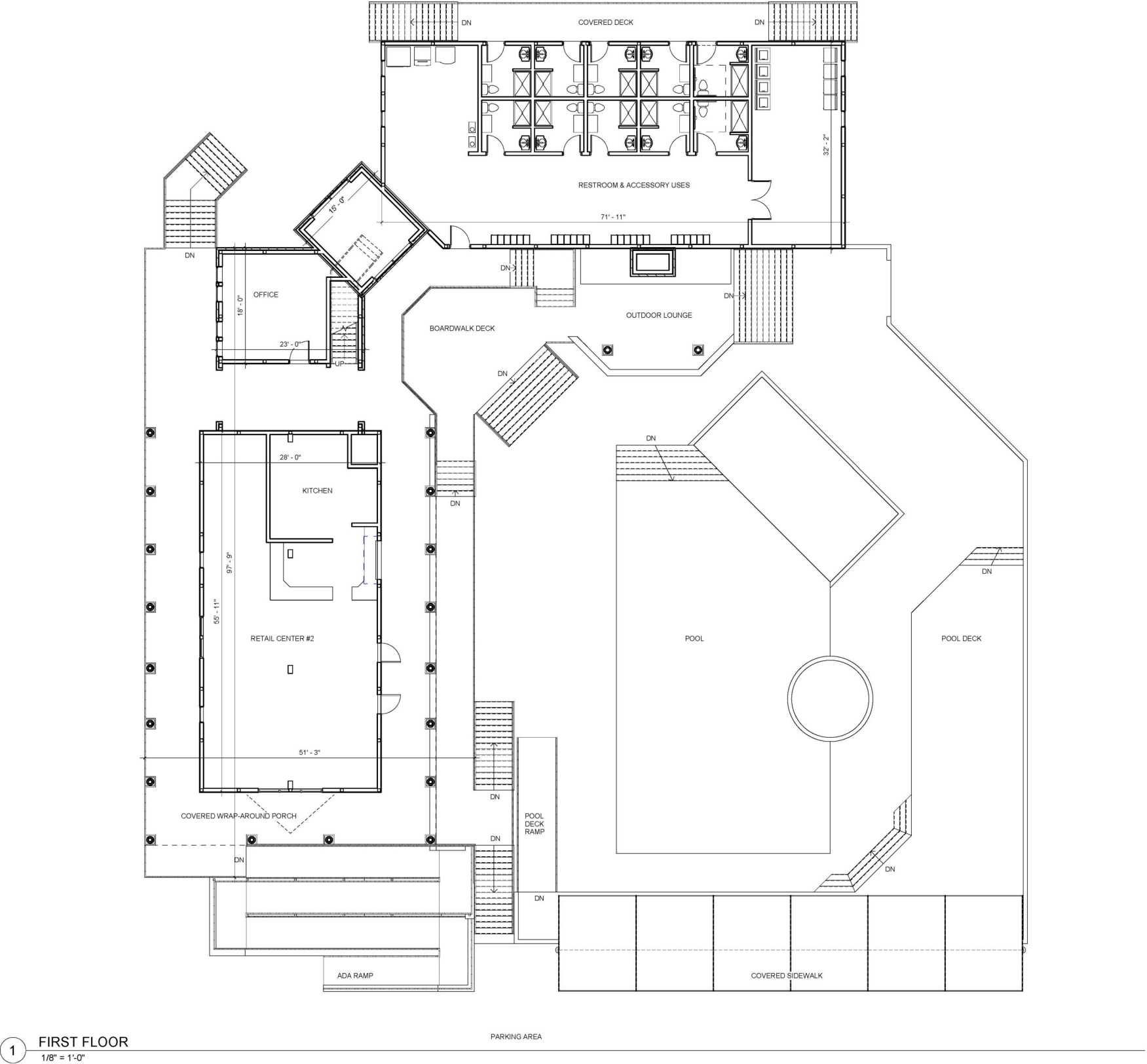


BLUE ELK RETAIL BUILDING #1 - WEST ELEVATION 1/4" = 1'-0"

prince alexander

ARCHITECTURE   ENGINEERING   URBAN DESIGN   LAND PLANNING   ECONOMIC DEVELOPMENT   INTERIOR DESIGN

850 SOUTH MERIDIAN STREET INDIANAPOLIS IN 46225-1110   317-261-0070   WWW.PRINCEALEXANDER.BIZ



RETAIL CENTER #2

4350 SF ENCLOSED

8135 SF TOTAL FIRST FLOOR

7700 SF POOL & POOL DECK

**prince alexander**

ARCHITECTURE   ENGINEERING   URBAN DESIGN   LAND PLANNING   ECONOMIC DEVELOPMENT   INTERIOR DESIGN

850 SOUTH MERIDIAN STREET INDIANAPOLIS IN 46225-1110   317-261-0070   WWW.PRINCEALEXANDER.BIZ



BLUE ELK RETAIL BUILDING #2 - SOUTH ELEVATION 1/4" = 1'-0"

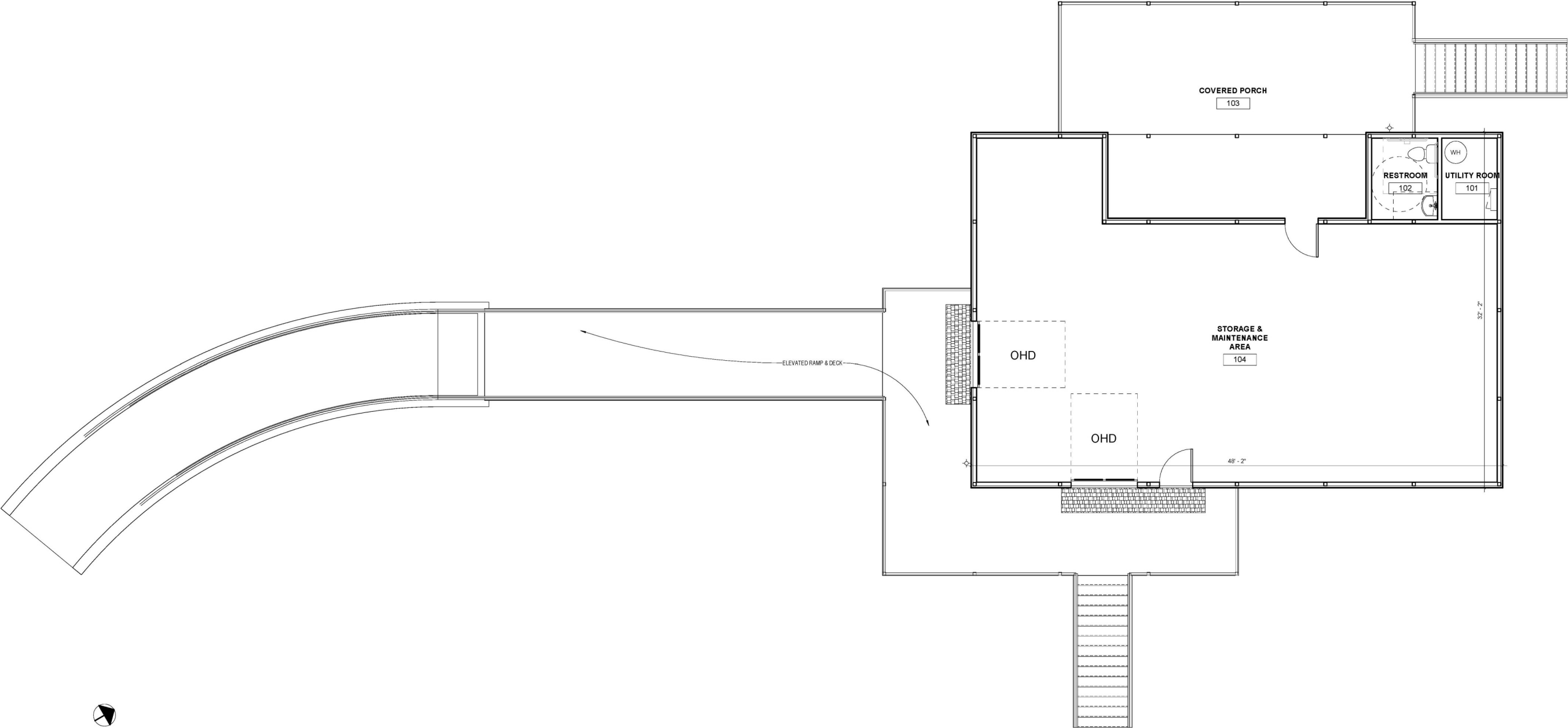


BLUE ELK RETAIL BUILDING #2 - WEST ELEVATION

prince alexander

ARCHITECTURE   ENGINEERING   URBAN DESIGN   LAND PLANNING   ECONOMIC DEVELOPMENT   INTERIOR DESIGN

850 SOUTH MERIDIAN STREET INDIANAPOLIS IN 46225-1110   317-261-0070   WWW.PRINCEALEXANDER.BIZ



1 FIRST FLOOR  
1/4" = 1'-0"

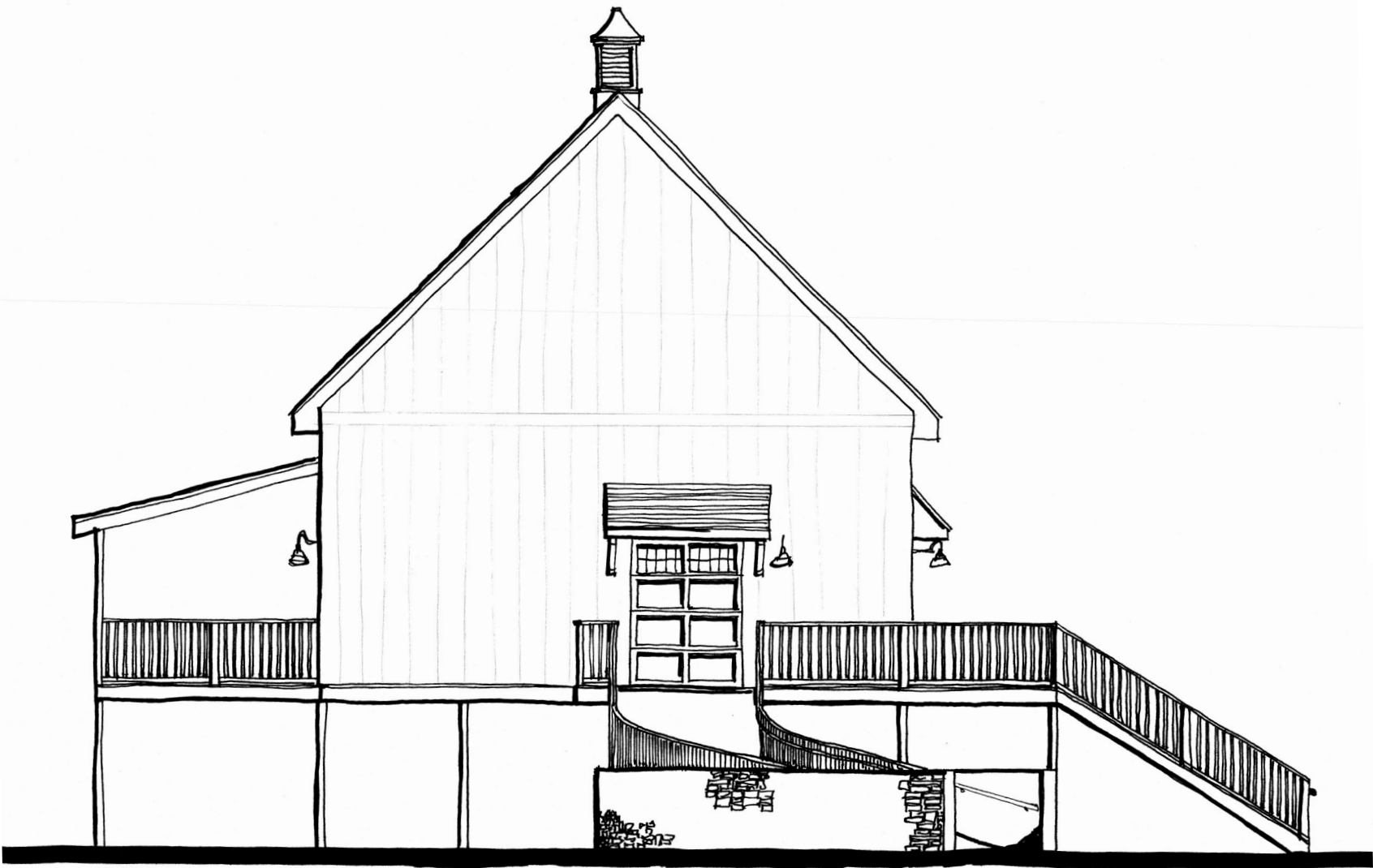


MAINTENANCE BUILDING

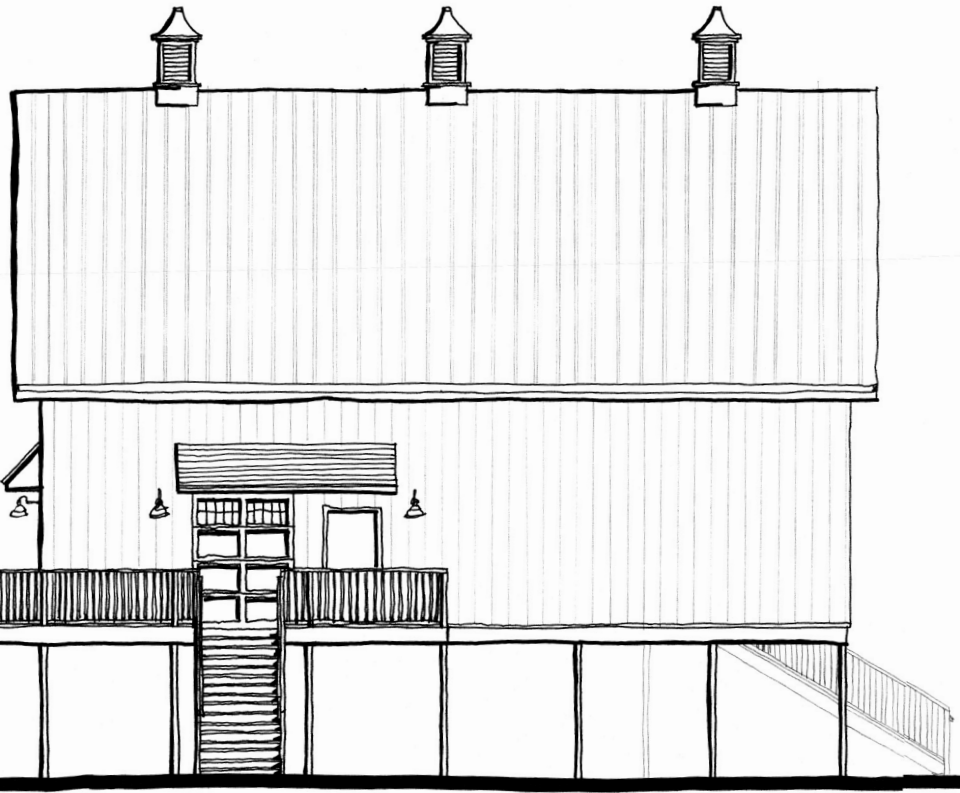
1300 SF ENCLOSED

2300 SF TOTAL FIRST FLOOR





BLUE ELK MAINTENANCE BUILDING  $\frac{1}{4}"=1'-0"$



BLUE ELK - MAINTENANCE BUILDING -  $\frac{1}{4}"=1'-0"$

prince alexander

ARCHITECTURE ENGINEERING URBAN DESIGN LAND PLANNING ECONOMIC DEVELOPMENT INTERIOR DESIGN

850 SOUTH MERIDIAN STREET INDIANAPOLIS IN 46225-1110 317-261-0070 WWW.PRINCEALEXANDER.BIZ



prince alexander

ARCHITECTURE   ENGINEERING   URBAN DESIGN   LAND PLANNING   ECONOMIC DEVELOPMENT   INTERIOR DESIGN

850 SOUTH MERIDIAN STREET INDIANAPOLIS IN 46225-1110   317-261-0070   WWW.PRINCEALEXANDER.BIZ



prince alexander

ARCHITECTURE   ENGINEERING   URBAN DESIGN   LAND PLANNING   ECONOMIC DEVELOPMENT   INTERIOR DESIGN

850 SOUTH MERIDIAN STREET INDIANAPOLIS IN 46225-1110   317-261-0070   WWW.PRINCEALEXANDER.BIZ



PANORAMIC OF SITE FROM E OLD SR 46



FUTURE ENTRY + EXIT DRIVE LOCATION



E OLD SR 46—LOOKING NORTH



E OLD SR 46—LOOKING SOUTHWEST



ARCHITECTURE   ENGINEERING   URBAN DESIGN   LAND PLANNING   ECONOMIC DEVELOPMENT   INTERIOR DESIGN

850 SOUTH MERIDIAN STREET INDIANAPOLIS IN 46225-1110   317-261-0070   WWW.PRINCEALEXANDER.BIZ



“THREE B’S”  
BUTTERFLIES, BEES & BATS  
HERBTOLOGY POOLS  
TOADS, FROGS & SALAMANDERS

NATIVE RESTORATION  
POLLINATOR ZONES  
MILKWEED—MONARCH B’S  
SHAGBARK HICKORY—IND. BROWN BATS



prince alexander

ARCHITECTURE   ENGINEERING   URBAN DESIGN   LAND PLANNING   ECONOMIC DEVELOPMENT   INTERIOR DESIGN

850 SOUTH MERIDIAN STREET INDIANAPOLIS IN 46225-1110   317-261-0070   WWW.PRINCEALEXANDER.BIZ