



RESOLUTION NO. RD 2020-01

**RESOLUTION OF THE TOWN OF NASHVILLE REDEVELOPMENT COMMISSION
TERMINATING THE EXISTING NASHVILLE CENTRAL ECONOMIC
DEVELOPMENT AREA AND ALLOCATION AREA, AND DECLARING A NEW
AREA IN THE TOWN OF NASHVILLE, INDIANA, AS AN ECONOMIC
DEVELOPMENT AREA AND APPROVING AN ECONOMIC DEVELOPMENT PLAN
FOR SAID AREA**

WHEREAS, the Town of Nashville Redevelopment Commission (the "Commission"), as the governing body of the Town of Nashville Redevelopment District (the "District"), pursuant to Indiana Code 36-7-14, as amended (the "Act"), previously has adopted and confirmed resolutions creating and expanding the "Nashville Central Economic Development Area" (the "Existing Economic Development Area") and the "Nashville Central Allocation Area" (the "Existing Allocation Area") which consist of the parcels set forth in Exhibit A attached hereto, and the Commission now desires to dissolve and terminate the Existing Economic Development Area and the Existing Allocation Area; and

WHEREAS, the Commission has thoroughly studied that area of the Town of Nashville, Indiana (the "Town"), as described on Exhibit B attached hereto and hereby designated as the "2020 Central Nashville Economic Development Area" (the "New Economic Development Area"); and

WHEREAS, the Commission has caused to be prepared maps and plats showing the boundaries of the New Economic Development Area, the location of various parcels of property, streets, alleys, and other features affecting the acquisition, clearance, replatting, replanning, rezoning, economic development or redevelopment of the New Economic Development Area, and the parts of the New Economic Development Area that are to be devoted to public ways, sewerage and other public purposes under the Plan (as defined below); and

WHEREAS, there has been presented to this meeting for consideration and approval of the Commission an economic development plan for the New Economic Development Area entitled "Economic Development Plan – 2020 Central Nashville Economic Development Area" (the "Plan"); and

WHEREAS, the Commission has caused to be prepared estimates of the costs of the economic development projects as set forth in the Plan; and

WHEREAS, the Plan and supporting data were reviewed and considered by the Commission at this meeting; and

WHEREAS, Section 39 of the Act permits the creation of "allocation areas" to provide for the allocation and distribution of property taxes for the purposes and in the manner provided in said section; and

WHEREAS, Sections 41 and 43 of the Act permit the creation of "economic development areas" and provide that all of the rights, powers, privileges and immunities that may be exercised by this Commission in an area needing redevelopment or urban renewal area may be exercised in

FILED

MAY 21 2021

Julia R. Ross
AUDITOR OF BROWN COUNTY

an economic development area, subject to the conditions set forth in the Act; and

WHEREAS, the Commission deems it advisable to apply the provisions of said Sections 39, 41, and 43 of the Act to the Plan and financing of the Plan.

NOW, THEREFORE, BE IT RESOLVED by the Town of Nashville Redevelopment Commission, as the governing body of the Town of Nashville Redevelopment District, as follows:

1. The Commission hereby dissolves and terminates the Existing Economic Development Area and the Existing Allocation Area.

2. The Plan for the New Economic Development Area promotes significant opportunities for the gainful employment of the citizens of the Town, will assist in attracting major new business enterprises to the Town, may result in the retention or expansion of significant business enterprises existing in the Town, and meets other purposes of Sections 2.5, 41 and 43 of the Act, including without limitation benefiting the public health, safety and welfare, increasing the economic well-being of the Town and the State of Indiana (the "State"), and serving to protect and increase property values in the Town and the State.

3. The Plan for the New Economic Development Area cannot be achieved by regulatory processes or by the ordinary operation of private enterprise without resort to the powers allowed under Sections 2.5, 41 and 43 of the Act because of lack of local public improvements, existence of improvements or conditions that lower the value of the land below that of nearby land, or other similar conditions, including without limitation the cost of the projects contemplated by the Plan and the necessity for requiring the proper use of land so as to best serve the interests of the Town and its citizens.

4. The public health and welfare will be benefited by accomplishment of the Plan for the New Economic Development Area.

5. The accomplishment of the Plan for the New Economic Development Area will be a public utility and benefit as measured by the attraction or retention of permanent jobs, an increase in the property tax base, improved diversity of the economic base and other similar public benefits.

6. The Plan for the New Economic Development Area conforms to other development and redevelopment plans for the Town.

7. In support of the findings and determinations set forth in Sections 2 through 6 above, the Commission hereby adopts the specific findings set forth in the Plan.

8. Except as otherwise set forth in the Plan, the Plan does not contemplate the acquisition of property as a part of the economic development strategy, and the Commission does not at this time propose to acquire any specific parcels of land or interests in land within the boundaries of the New Economic Development Area. If the Commission proposes to acquire specific parcels of land, the required procedures for amending the Plan under the Act will be followed, including notice by publication, notice to affected property owners and a public hearing.

9. The Commission finds that no residents of the New Economic Development Area will be displaced by any project resulting from the Plan, and therefore finds that it does not need to give consideration to transitional and permanent provisions for adequate housing for the residents.

10. The Plan is hereby in all respects approved, and the secretary of the Commission is hereby directed to file a certified copy of the Plan with the minutes of this meeting.

11. The New Economic Development Area is hereby designated as an “economic development area” under Section 41 of the Act.

12. The entire New Economic Development Area is hereby designated as an “allocation area” pursuant to Section 39 of the Act for purposes of the allocation and distribution of property taxes on real property for the purposes and in the manner provided by said Section. Any property taxes subsequently levied by or for the benefit of any public body entitled to a distribution of property taxes on taxable property in said allocation area shall be allocated and distributed as follows:

Except as otherwise provided in said Section 39, the proceeds of taxes attributable to the lesser of the assessed value of the property for the assessment date with respect to which the allocation and distribution is made, or the base assessed value, shall be allocated to and when collected paid into the funds of the respective taxing units. Except as otherwise provided in said Section 39, property tax proceeds in excess of those described in the previous sentence shall be allocated to the redevelopment district and when collected paid into an allocation fund for said allocation area that may be used by the redevelopment district to do one or more of the things specified in Section 39(b)(3) of the Act, as the same may be amended from time to time. Said allocation fund may not be used for operating expenses of the Commission. Except as otherwise provided in the Act, before June 15 of each year, the Commission shall take the actions set forth in Section 39(b)(4) of the Act.

13. Said allocation area is hereby designated as the “2020 Central Nashville Allocation Area” (the “Allocation Area”), and said allocation fund is hereby designated as the “2020 Central Nashville Allocation Fund” (the “Allocation Fund”). The base assessment date for the Allocation Area shall be January 1, 2020. This allocation provisions herein relating to the Allocation Area shall expire on the later of twenty-five (25) years after the date on which the first obligation is incurred to pay principal and interest on bonds or lease rentals on leases payable from tax increment revenues derived from the Allocation Area.

14. Based on a study of the New Economic Development Area and the specific findings set forth in the Plan, the Commission hereby finds that the adoption of the allocation provision as provided herein will result in new property taxes in the Allocation Area that would not have been generated but for the adoption of the allocation provision.

15. The officers of the Commission are hereby directed to make any and all required filings with the Indiana Department of Local Government Finance and the Brown County Auditor in connection with the creation of the Allocation Area.

16. The provisions of this Resolution shall be subject in all respects to the Act and any amendments thereto.

17. This Resolution, together with any supporting data and together with the Plan, shall be submitted to the Brown County Area Plan Commission (the "Plan Commission") and the Town Council of the Town (the "Council"), and if approved by the Plan Commission and the Council shall be submitted to a public hearing and remonstrance as provided in the Act, after public notice all as required by the Act.

18. This resolution shall take effect immediately upon its adoption by the Commission.

Adopted the 16th day of December, 2020.

TOWN OF NASHVILLE REDEVELOPMENT
COMMISSION

BY REMOTE ACCESS VOTE
President Raymond Modglin

BY REMOTE ACCESS VOTE
Vice President Victor Bongard

Secretary Tyra Miller

BY REMOTE ACCESS VOTE
Member Roger Kelso

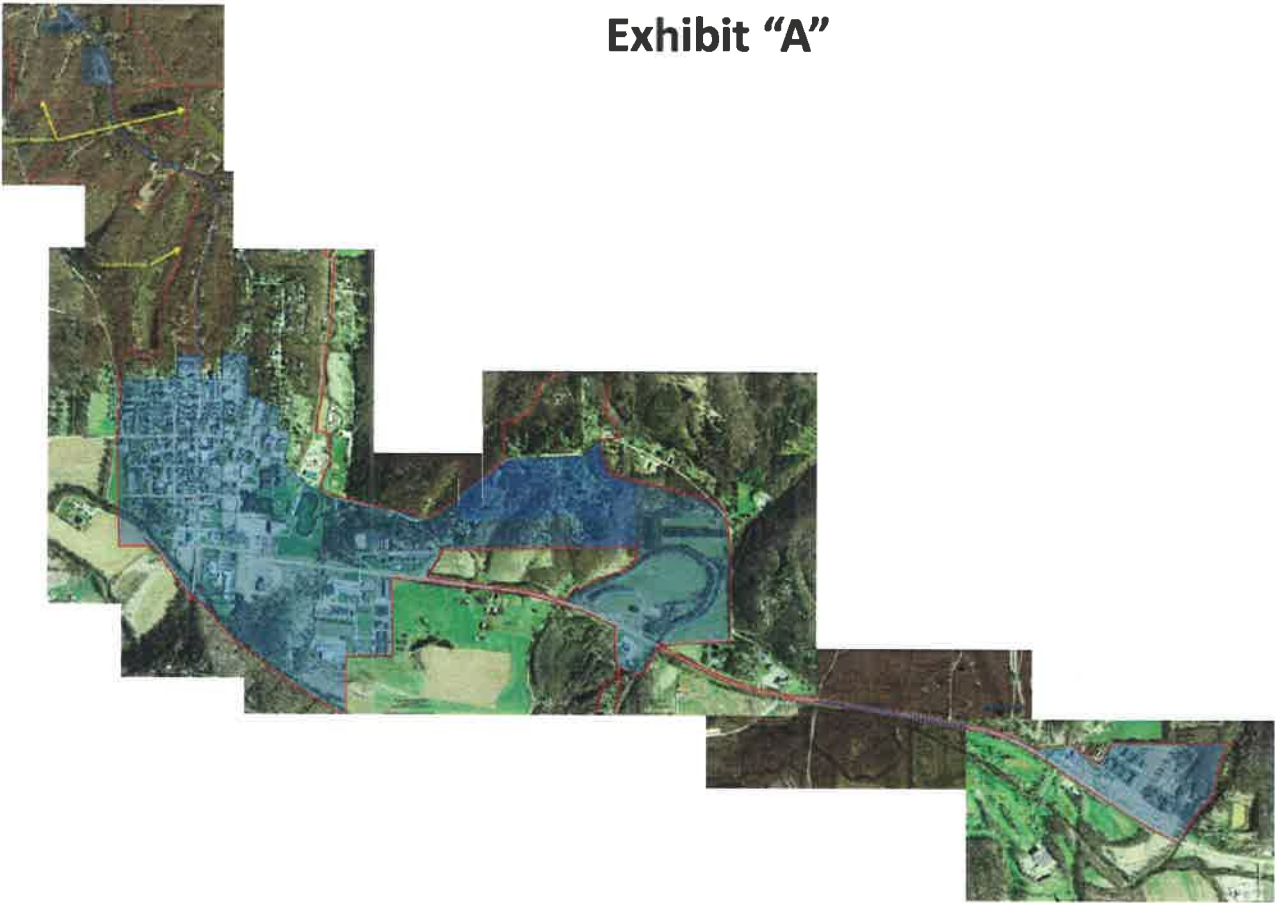
BY REMOTE ACCESS VOTE
Member Bob Willsey

EXHIBIT A

**Description of the Existing Nashville Central Economic Development Area
and Allocation Area**

Attached hereto is a map and a list of the parcels comprising the existing Nashville Central Economic Development Area and Allocation Area which are being dissolved and terminated by this Resolution.

Exhibit "A"



 Corporate Boundary
 TIF Allocation Area

Town of Nashville, Indiana


 Date: 4-2-12
Scale: Not to Scale
North

Exhibit "A"

Nashville Central Allocation Area

Parcel Number	Parcel Number	Parcel Number
07-06-13-100-267.000-005	07-07-19-100-402.000-000	07-07-19-100-565.000-005
07-06-13-100-217.000-005	07-07-19-100-404.000-005	07-07-19-100-564.000-005
07-06-13-100-216.000-005	07-07-19-100-406.000-005	07-07-19-100-563.000-005
07-06-13-100-215.000-005	07-07-19-100-405.000-005	07-07-19-100-559.000-005
07-06-13-100-100.000-005	07-07-19-100-407.000-005	07-07-19-100-560.000-005
07-07-19-100-286.000-005	07-07-19-100-408.000-005	07-07-19-100-562.000-005
07-07-19-100-287.000-005	07-07-19-100-409.000-005	07-07-19-100-561.000-005
07-07-22-100-281.000-005	07-07-19-100-413.000-005	07-07-19-100-521.000-005
07-07-19-100-280.000-005	07-07-19-100-410.000-005	07-07-19-100-523.000-005
07-07-19-100-279.000-005	07-07-19-100-411.000-005	07-07-19-100-525.000-005
07-07-19-100-277.000-005	07-07-19-100-412.000-005	07-07-19-100-522.000-005
07-06-24-200-173.000-005	07-07-19-100-414.000-005	07-07-19-100-524.000-005
07-07-19-100-295.000-005	07-07-19-100-416.000-005	07-07-19-100-527.000-005
07-07-19-100-297.000-005	07-07-19-100-417.000-005	07-07-19-100-555.000-005
07-07-19-100-299.000-005	07-07-19-100-669.000-005	07-07-19-100-556.000-005
07-07-19-100-300.000-005	07-07-19-100-420.000-005	07-07-19-100-558.000-005
07-07-19-100-302.000-005	07-07-19-100-668.000-000	07-07-19-100-557.000-005
07-07-19-100-296.000-005	07-07-19-100-670.000-005	07-07-19-100-552.000-005
07-07-19-100-298.000-005	07-07-19-100-671.000-005	07-07-19-100-553.000-005
07-07-19-100-303.000-005	07-07-19-100-673.000-000	07-07-19-100-554.000-005
07-07-19-100-305.000-005	07-07-19-100-674.000-000	07-07-19-100-531.000-005
07-07-19-100-304.000-005	07-07-19-100-675.000-005	07-07-19-100-533.109-005
07-07-19-100-306.000-005	07-07-19-100-672.000-005	07-07-19-100-533.000-005
07-07-19-100-307.000-005	07-07-19-100-676.000-005	07-07-19-100-530.000-005
07-07-19-100-308.000-005	07-07-19-100-466.000-005	07-07-19-100-534.000-005
07-07-19-100-309.000-005	07-07-19-100-465.000-005	07-07-19-100-535.000-005
07-07-19-100-310.000-005	07-07-19-100-654.000-005	07-07-19-100-536.000-005
07-07-19-100-311.000-005	07-07-19-100-655.000-005	07-07-19-100-548.000-005
07-07-19-100-312.000-005	07-07-19-100-464.000-005	07-07-19-100-547.000-005
07-07-19-100-313.000-005	07-07-19-100-656.000-005	07-07-19-100-546.000-005
07-07-19-100-314.000-005	07-06-24-200-176.000-005	07-07-19-100-549.000-005
07-07-19-100-315.000-005	07-07-19-100-421.000-005	07-07-19-100-550.000-005
07-07-19-100-316.000-005	07-07-19-100-507.000-005	07-07-19-100-551.000-005
07-07-19-100-316.001-005	07-07-19-100-508.000-005	07-07-19-100-542.000-005
07-07-19-100-317.000-005	07-07-19-100-425.000-005	07-07-19-100-543.000-005
07-07-19-100-318.000-005	07-07-19-100-423.000-005	07-07-19-100-545.000-005
07-07-19-100-319.000-005	07-07-19-100-502.000-005	07-07-19-100-544.000-005
07-07-19-100-320.000-005	07-07-19-100-503.000-005	07-07-19-100-541.000-005
07-07-19-100-325.000-005	07-07-19-100-504.000-005	07-07-19-100-539.000-005
07-07-19-100-324.000-005	07-07-19-100-505.000-005	07-07-19-100-538.000-005
07-07-19-100-327.000-005	07-07-19-100-426.000-005	07-07-19-100-537.000-005
07-07-19-100-326.000-005	07-07-19-100-428.000-005	07-07-19-100-474.000-000
07-07-19-100-327.001-005	07-07-19-100-429.000-005	07-07-19-200-473.000-000

Exhibit "A"

Nashville Central Allocation Area

Parcel Number	Parcel Number	Parcel Number
07-07-19-100-328.000-005	07-07-19-100-427.000-005	07-07-19-200-475.000-000
07-07-19-100-329.000-005	07-07-19-100-496.000-005	07-07-19-100-472.000-000
07-07-19-100-330.000-005	07-07-19-100-497.000-005	07-07-19-100-600.000-000
07-07-19-100-331.000-005	07-07-19-100-498.000-005	07-07-19-100-608.000-000
07-07-19-100-332.000-005	07-07-19-100-500.000-005	07-07-19-100-596.000-005
07-07-19-100-333.000-005	07-07-19-100-499.000-005	07-07-19-100-597.000-005
07-07-19-100-334.000-005	07-07-19-100-501.000-005	07-07-19-100-601.000-00
07-07-19-100-335.000-005	07-07-19-100-431.000-005	07-07-19-100-599.000-005
	07-07-19-100-432.001-005	07-07-19-100-602.000-005
	07-07-19-100-433.000-005	07-07-19-100-603.000-005
	07-07-19-100-433.001-005	07-07-19-100-604.000-005
	07-07-19-100-492.000-005	07-07-19-100-605.000-005
07-06-24-200-175.000-005	07-07-19-100-493.000-005	07-07-19-100-606.000-005
07-06-24-200-175.000-005	07-07-19-100-494.000-005	07-07-19-100-607.000-005
07-06-24-200-175.000-005	07-07-19-100-495.000-005	07-07-19-100-576.000-005
07-07-19-100-341.000-005	07-07-19-100-434.000-005	07-07-19-100-577.000-005
07-07-19-100-342.000-005	07-07-19-100-435.000-005	07-07-19-100-583.000-005
07-07-19-100-343.000-005	07-07-19-100-436.000-005	07-07-19-100-584.000-005
07-07-19-100-346.000-005	07-07-19-100-437.000-005	07-07-19-100-578.000-004
07-06-24-200-175.000-005	07-07-19-100-438.001-005	07-07-19-300-612.000-005
07-07-19-100-349.000-005	07-07-19-100-438.000-005	07-07-19-100-593.000-000
07-07-19-100-350.000-005	07-07-19-100-441.000-005	07-07-19-100-593.001-000
07-07-19-100-351.000-005	07-07-19-100-439.001-005	07-07-19-100-594.000-000
07-07-19-100-352.000-005	07-07-19-100-439.002-005	07-07-19-100-595.000-005
07-07-19-100-353.000-005	07-07-19-100-439.000-005	07-07-19-300-610.000-005
07-07-19-100-355.000-005	07-07-19-100-442.000-005	07-07-19-300-133.001-000
07-07-19-100-356.000-005	07-07-19-100-440.000-005	07-07-19-300-133.000-005
07-07-19-100-357.000-005	07-07-19-100-443.000-005	07-07-19-300-457.000-005
07-07-19-100-358.000-005	07-07-19-100-489.000-005	07-07-19-300-457.001-005
07-07-19-100-359.000-005	07-07-19-100-490.000-005	07-07-19-400-620.000-005
07-07-19-100-360.000-005	07-07-19-100-491.000-005	07-07-19-400-622.000-005
07-07-19-100-361.000-005	07-07-19-100-484.000-005	07-07-19-400-625.000-005
07-07-19-100-362.000-005	07-07-19-100-483.000-005	07-07-19-400-623.000-005
07-07-19-100-363.000-005	07-07-19-100-486.000-005	07-07-19-400-626.000-005
07-07-19-100-364.000-005	07-07-19-100-485.000-005	07-07-19-400-628.000-005
07-07-19-100-365.000-005	07-07-19-100-487.000-005	07-07-19-400-629.000-005
07-07-19-100-366.000-005	07-07-19-100-488.000-005	07-07-19-300-457.002-005
07-07-19-100-367.000-005	07-07-19-100-444.000-005	07-07-19-400-638.000-005
07-07-19-100-368.000-005	07-07-19-100-445.000-005	07-07-19-400-639.000-005
07-07-19-100-369.000-005	07-07-19-100-446.000-005	07-07-19-400-637.000-005
07-07-19-100-370.000-005	07-07-19-100-447.000-005	07-07-19-300-457.003-005
07-07-19-100-371.000-005	07-07-19-100-448.000-005	07-07-19-400-631.000-005
07-07-19-100-372.000-005	07-07-19-100-449.000-005	07-07-19-400-633.000-005

Exhibit "A"

Nashville Central Allocation Area

Parcel Number	Parcel Number	Parcel Number
07-07-19-100-373.000-005	07-07-19-100-450.000-005	07-07-19-400-632.000-005
07-07-19-100-374.000-005	07-07-19-100-452.000-005	07-07-19-400-635.000-005
07-07-19-100-476.000-005	07-07-19-100-451.000-005	07-07-19-300-636.000-005
07-07-19-100-375.000-005	07-07-19-100-453.000-005	07-07-19-400-634.000-005
07-07-19-100-375.001-005	07-07-19-100-454.000-005	07-07-19-200-112.000-005
07-07-19-100-375.002-005	07-07-19-100-455.000-005	07-07-19-200-113.000-005
07-07-19-100-377.000-005	07-07-19-100-478.000-005	07-07-19-200-114.000-004
07-07-19-100-378.000-005	07-07-19-100-479.000-005	07-07-19-200-115.000-005
07-07-19-100-384.000-005	07-07-19-100-481.000-005	07-07-19-200-116.000-005
07-07-19-100-385.000-005	07-07-19-100-477.000-005	07-07-19-200-117.000-005
07-07-19-100-386.000-005	07-07-19-100-480.000-005	07-07-19-400-618.000-005
07-07-19-100-387.000-005	07-07-19-100-482.000-005	07-07-19-400-619.000-005
07-07-19-100-388.000-005	07-07-19-100-456.000-005	07-07-19-200-118.000-005
07-07-19-100-390.000-005	07-07-19-100-473.000-005	07-07-19-200-119.000-005
07-07-19-100-381.000-005	07-07-19-100-469.000-005	07-07-19-200-121.000-005
07-07-19-100-379.000-005	07-07-19-100-470.000-005	07-07-19-200-120.000-005
07-07-19-100-380.000-005	07-07-19-100-509.000-005	07-07-19-200-160.000-005
07-07-22-100-382.000-005	07-07-19-100-511.000-005	07-07-19-200-161.000-005
07-07-19-100-383.000-005	07-07-19-100-512.000-000	07-07-19-200-162.000-005
07-07-19-100-391.000-005	07-07-19-100-572.000-005	07-07-19-200-163.000-005
07-07-19-100-391.001-005	07-07-19-100-573.000-005	07-07-19-200-253.000-005
07-07-19-100-392.000-005	07-07-19-100-574.000-005	07-07-19-400-615.000-005
07-07-19-100-393.000-005	07-07-19-100-575.000-005	07-07-19-400-617.000-005
07-07-19-100-394.000-005	07-07-19-100-510.000-005	07-07-19-400-616.000-005
07-07-19-100-395.000-005	07-07-19-100-513.000-005	07-07-19-400-614.000-005
07-07-19-100-396.000-005	07-07-19-100-514.000-005	07-07-20-100-177.000-004
07-07-19-100-389.000-005	07-07-19-100-569.000-005	07-07-20-300-247.000-005
07-07-19-100-397.000-005	07-07-19-100-570.000-005	07-07-20-300-248.000-005
07-07-19-100-398.000-005	07-07-19-100-571.000-005	07-07-20-300-247.001-005
07-07-19-100-399.000-005	07-07-19-100-515.000-005	07-07-28-100-103.000-004
07-07-19-100-400.000-005	07-07-19-100-516.000-005	07-07-21-300-170.000-004
07-07-19-100-401.000-005	07-07-19-100-517.000-005	07-07-28-100-102.000-004
07-07-19-100-403.100-005	07-07-19-100-519.000-005	07-07-28-100-101.000-004
	07-07-19-100-526.000-005	07-07-28-200-101.000-004
	07-07-19-100-518.000-005	07-07-28-200-128.000-005
	07-07-19-100-520.000-005	07-07-28-200-101.001-004
	07-07-19-100-520.001-005	07-07-28-200-129.000-005
	07-07-19-100-568.000-005	
	07-07-19-100-567.000-005	
	07-07-19-100-566.000-005	

EXHIBIT B

**Description of the New 2020 Central Nashville Economic Development Area
and Allocation Area**

Attached hereto is a map and a list of the parcels comprising the new 2020 Central Nashville Economic Development Area and Allocation Area which are being created by this Resolution.

DMS 18741032.1

Exhibit "B"

2020 Central Nashville

Parcel Number	Parcel Number
Jefferson/Mound/135	Mound/Vanburen
07-07-19-100-286.000-005	07-07-19-100-284.000-005
07-07-19-100-287.000-005	07-07-19-100-283.000-005
Mound/Jefferson/Honeysuckle/Printers Ln	07-07-19-100-282.000-005
07-07-19-100-315.000-005	07-07-19-100-282.002-005
07-07-19-100-316.000-005	07-07-19-100-282.001-005
07-07-19-100-316.001-005	07-07-19-100-285.000-005
Printers Ln/Jefferson/Gould/Honeysuckle	Gould/Vanburen/Mound/Locust
07-07-19-100-317.000-005	07-07-19-100-327.001-005
07-07-19-100-318.000-005	07-07-19-100-328.000-005
07-07-19-100-319.000-005	07-07-19-100-329.000-005
07-07-19-100-320.000-005	07-07-19-100-330.000-005
Printers Ln/Honeysuckle/ Mound/ Vanburen	07-07-19-100-332.000-005
07-07-19-100-321.000-005	07-07-19-100-335.000-005
07-07-19-100-322.000-005	07-07-19-100-333.000-005
07-07-19-100-323.000-005	Main/Vanburen/Gould/Locust
Gould/Honeysuckle/Printers Ln/ Vanburen	07-07-19-100-401.000-005
07-07-19-100-327.000-005	07-07-19-100-403.000-005
07-07-19-100-324.000-005	00-07-00-100-403.001-000
07-07-19-100-327.010-005	00-07-00-100-402.000-000
07-07-19-100-325.000-005	07-07-19-100-405.000-005
07-07-19-100-326.000-005	07-07-19-100-406.000-005
Mollys Ln/ Jefferson/Honeysuckle/Gould	07-07-19-100-407.000-005
07-07-19-100-377.000-005	07-07-19-100-408.000-005
07-07-19-100-375.000-005	Old Hickory/Vanburen/Main/Old School
07-07-19-100-375.001-005	07-07-19-100-444.000-005
07-07-19-100-378.000-005	07-07-19-100-445.000-005
07-07-19-100-375.002-005	07-07-19-100-446.000-005
Mollys Ln/Honeysuckle/Gould/ Vanburen	07-07-19-100-447.000-005
07-07-19-100-380.000-005	07-07-19-100-448.000-005
07-07-19-100-379.000-005	07-07-19-100-449.000-005
07-07-19-100-383.000-005	Old Hickory/Old School/Main/
Main St/Jefferson/Mollys Ln/Honeysuckle	07-07-19-100-454.000-005
07-07-19-100-384.000-005	07-07-19-100-451.000-005
07-07-19-100-385.000-005	07-07-19-100-453.000-005
07-07-19-100-386.000-005	07-07-19-100-455.000-005
07-07-19-100-387.000-005	Franklin/Vanburen/Old Hickory/Old School
07-07-19-100-388.000-005	07-07-19-100-478.000-005
07-07-19-100-476.001-005	07-07-19-100-479.000-005
07-07-19-100-390.000-005	07-07-19-100-481.000-005

Exhibit "B"

2020 Central Nashville

Parcel Number	Parcel Number
Main St/Honeysuckle/Mollys Ln/Vanburen	Franklin/Old School/Old Hickory
07-07-19-100-391.000-005	07-07-19-100-477.000-005
07-07-19-100-391.001-005	07-07-19-100-480.000-005
07-07-19-100-392.000-005	07-07-19-100-482.000-005
07-07-19-100-393.000-005	Pittman House/Vanburen/Franklin
07-07-19-100-394.000-005	07-07-19-100-531.000-005
07-07-19-100-395.000-005	07-07-19-100-533.109-005
07-07-19-100-396.000-005	07-07-19-100-533.000-005
07-07-19-100-400.000-005	07-07-19-100-534.000-005
07-07-19-100-397.000-005	07-07-19-100-535.000-005
07-07-19-100-389.000-005	07-07-19-100-536.000-005
07-07-19-100-399.000-005	Washington/Vanburen/Pittmna House
07-07-19-100-398.000-005	07-07-19-100-548.000-005
Old Hickory Ln/Jefferson/Main St/Honeysuckle	07-07-19-100-549.000-005
07-07-19-100-476.002-005	07-07-19-100-547.000-005
07-07-19-100-434.000-005	07-07-19-100-550.000-005
07-07-19-100-435.000-005	07-07-19-100-551.000-005
07-07-19-100-436.000-005	07-07-19-100-542.000-005
07-07-19-100-437.000-005	07-07-19-100-543.000-005
Old Hickory Ln/Honeysuckle/Main St/Vanburen	07-07-19-100-545.000-005
07-07-19-100-438.001-005	07-07-19-100-544.000-005
07-07-19-100-438.000-005	School House/Vanburen/Washington
07-07-19-100-441.000-005	07-07-19-100-596.000-005
07-07-19-100-439.001-005	07-07-19-100-597.000-005
07-07-19-100-439.002-005	07-07-19-100-601.000-005
07-07-19-100-439.000-005	07-07-19-100-599.000-005
07-07-19-100-442.000-005	07-07-19-100-602.000-005
07-07-19-100-440.000-005	07-07-19-100-603.000-005
07-07-19-100-443.000-005	07-07-19-100-604.000-005
Franklin/Jefferson/Old Hickory/Honeysuckle	07-07-19-100-605.000-005
07-07-19-100-489.000-005	SR 46/Vanburen/School House
07-07-19-100-490.000-005	07-07-19-100-606.000-005
07-07-19-100-491.000-005	07-07-19-100-607.000-005

Exhibit "B"

2020 Central Nashville

Parcel Number	Parcel Number
Franklin/Honeysuckle/Old Hickory/Vanburen	Salt Creek/Vanburen/SR 46
07-07-19-100-484.000-005	07-07-19-300-610.000-005
07-07-19-100-483.000-005	Main/Locust/Gould/Commercial
07-07-19-100-485.000-005	07-07-19-100-409.000-005
07-07-19-100-486.000-005	07-07-19-100-410.000-005
07-07-19-100-487.000-005	07-07-19-100-411.000-005
07-07-19-100-488.000-005	07-07-19-100-412.000-005
Pittman House/Jefferson/Franklin/Honeysuckle	07-07-19-100-413.000-005
07-07-19-100-521.000-005	07-07-19-100-414.000-005
07-07-19-100-523.000-005	07-07-19-100-669.000-005
07-07-19-100-525.000-005	07-07-19-100-416.000-005
07-07-19-100-525.001-005	07-07-19-100-408.001-005
Pittman House/Honeysuckle/Franklin/Vanburen	07-07-19-100-417.000-005
07-07-19-100-522.000-005	07-07-19-100-420.000-005
07-07-19-100-524.000-005	Main/ Commercial/Gould/Artist
07-07-19-100-527.000-005	00-07-00-100-673.000-000
Washington/Honeysuckle/Pittman House/Vanburen	07-07-19-100-672.000-005
07-07-19-100-555.000-005	07-07-19-100-676.000-005
07-07-19-100-556.000-005	07-07-19-100-675.000-005
07-07-19-100-558.000-005	07-07-19-100-466.000-005
07-07-19-100-557.000-005	07-07-19-100-465.000-005
Washington/Honeysuckle/Pittman House/Vanburen	South of Main/School House
07-07-19-100-552.000-005	07-07-19-100-456.000-005
07-07-19-100-553.000-005	07-07-19-100-473.000-005
07-07-19-100-554.000-005	07-07-19-100-469.000-005
Pat Reilly/Jefferson/Washington/Vanburen	07-07-19-100-470.000-005
07-07-19-100-585.000-005	07-07-19-100-471.000-005
07-07-19-100-587.000-005	Willow/SR 46/Hawthorne
07-07-19-100-586.000-005	07-07-19-300-457.000-005
07-07-19-100-588.000-005	07-07-19-400-620.000-005
07-07-19-100-590.000-005	07-07-19-300-457.001-005
07-07-19-100-589.000-005	07-07-19-400-626.000-005
Treatment Plant/Jefferson/Pat Reilly/Vanburen	07-07-19-400-628.000-005
07-07-19-100-595.000-005	07-07-19-400-629.000-005
07-07-19-300-612.001-005	07-07-19-400-629.001-005
07-07-19-300-612.000-005	07-07-19-300-457.002-005

Exhibit "B" 2020 Central Nashville

Parcel Number	Parcel Number
SR 46 / Seasons	Willow/Salt Creek
07-07-19-400-619.000-005	07-07-19-400-639.000-005
07-07-19-400-618.000-005	07-07-19-400-638.000-005
07-07-19-400-614.000-005	07-07-19-400-637.000-005
07-07-19-400-153.001-005	07-07-19-400-635.000-005
	07-07-19-300-636.000-005
N SR 46/ Old SR 46	07-07-19-400-634.000-005
07-07-20-100-177.000-005	
	Willow/Hawthorne/SR 46/Mapleleaf
S SR 46/ Salt Creek/ Parkview	07-07-19-300-457.003-005
07-07-20-300-248.000-005	07-07-19-400-623.000-005
07-07-20-300-247.000-005	07-07-19-400-622.000-005
	07-07-19-400-625.000-005
	07-07-19-400-631.000-005
	07-07-19-400-633.000-005
	07-07-19-400-632.000-005

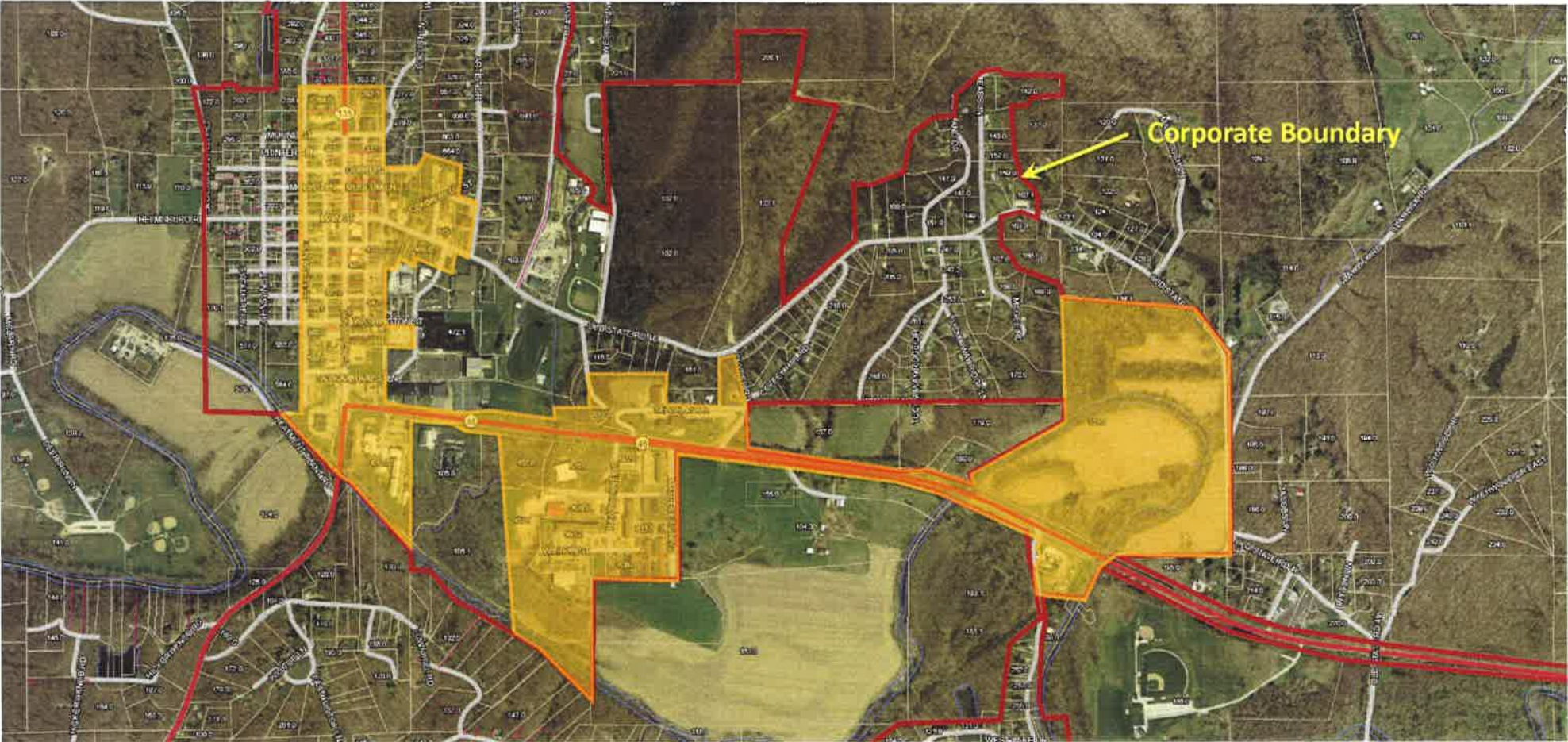


Exhibit "B"
Town of Nashville, Indiana

North
Date: 12 -15 -20
Scale: Not to Scale

2020 Nashville Central
TIF Allocation Area

